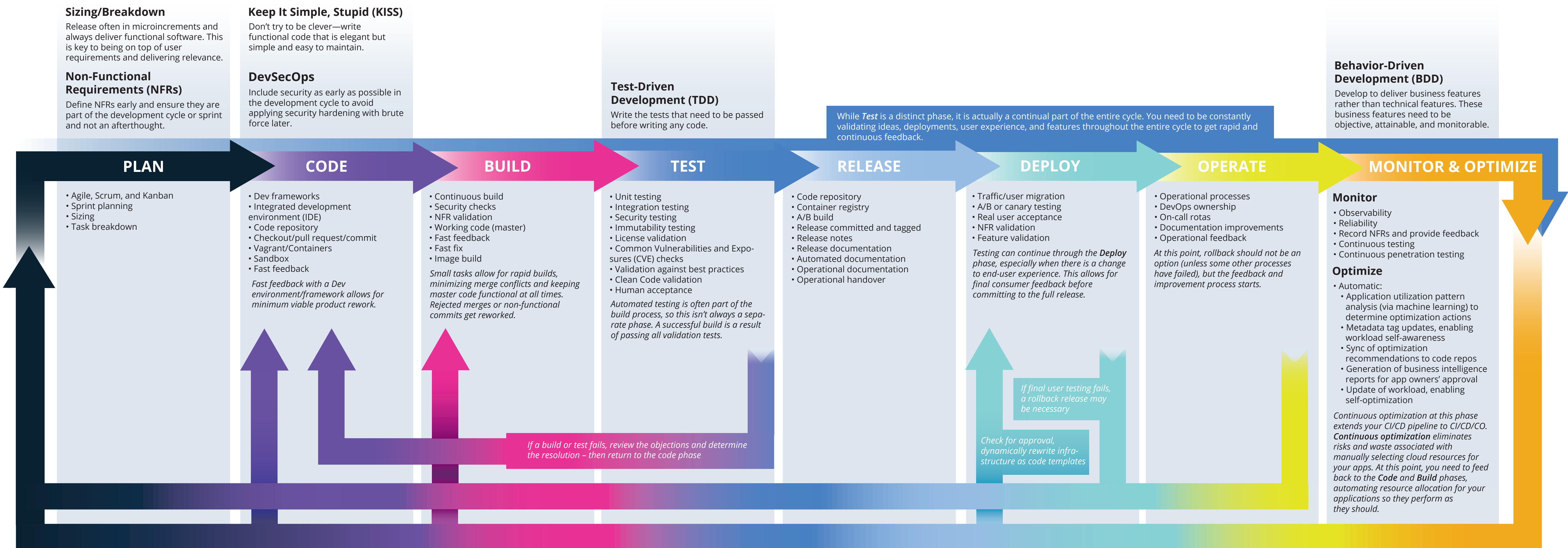


THE CI/CD FRAMEWORK

The arrival of modern technologies like containers and the emergence of architectures like *Continuous Integration and Continuous Delivery (CI/CD)* have made the practice of software development increasingly complex—and overwhelming. There is no best practice guide, no one size fits all, and *good* looks different for everyone. The framework below endeavors to demistify these complexities and create an accepted, best-of-breed lifecycle that provides a solid foundation, around which you can build your organization's plan—and achieve your goals.



SCRUM & AGILE



CONTAINERS



FRAMEWORKS



INTEGRATED DEVELOPMENT ENVIRONMENTS



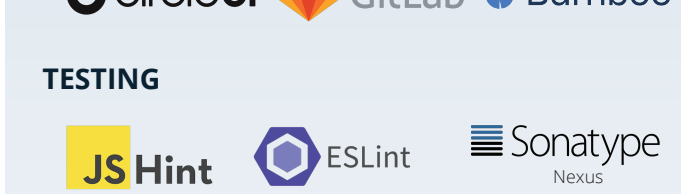
SOURCE CONTROL



BUILD PIPELINES



TESTING



SECURITY VALIDATION



INFRASTRUCTURE AS CODE/DECLARATIVE LANGUAGE



DEVOPS TOOLS



CONTAINER REGISTRIES



DEPLOYMENT AUTOMATION



CODE REPOSITORIES



KEY MANAGEMENT



DEPLOYMENT & CONFIGURATION MANAGEMENT



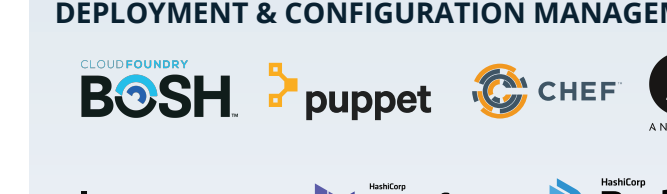
OVERLAY/SERVICE MESH



SECURITY



ORCHESTRATION



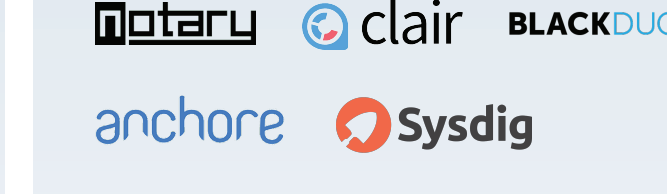
KUBERNETES ORCHESTRATION



MONITORING



INCIDENT RESPONSE/ITSM



OPTIMIZATION

